

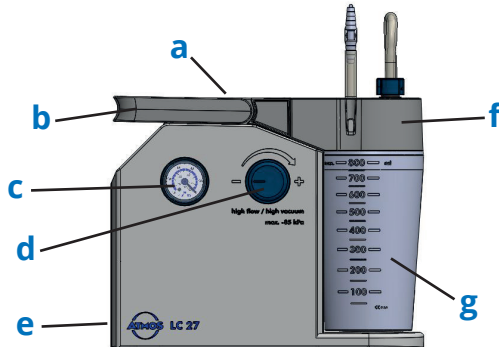
# Kurzanleitung | Quick Guide | Guide rapide



MedizinTechnik

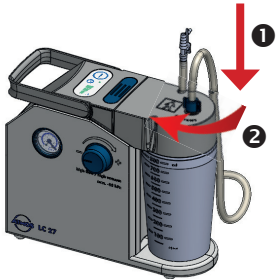
ATMOS LC 27 | ATMOS LC 27 Battery

## Vor der Absaugung | Before suction | Avant l'aspiration

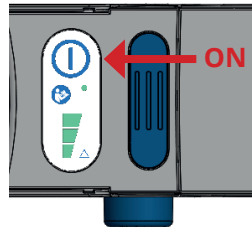


- a Bedienfeld / Control panel / Commandes
- b Tragegriff / Handle / Poignée de transport
- c Manometer / Vacuum gauge / Manomètre
- d Vakuumpregulierung / Vacuum regulation / Réglage de la dépression
- e Anschluss für Steckernetzteil / Connection for power supply unit / Connexion pour alimentation
- f Einpatienten-Sekrebehälterdeckel / Single patient secretion canister lid / Couvercle pour bocal à sécrétions à patient unique
- g Einpatienten-Sekretbehälter / Single patient secretion canister / Bocal à sécrétions à patient unique

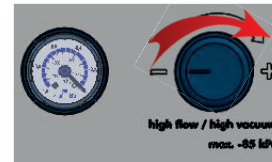
1



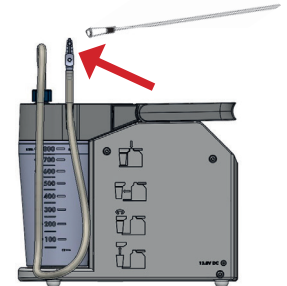
2



3



4



Diese Anleitung ersetzt nicht die Gebrauchsanweisung!  
This card does not replace the operating instructions!  
Ce manuel ne remplace pas le mode d'emploi !

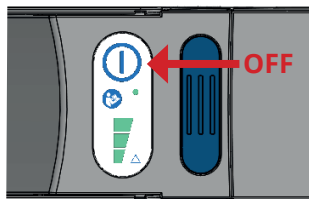


Beachten Sie die Gebrauchsanweisung!  
Please note the operating instructions!  
Respectez les instructions d'utilisation !

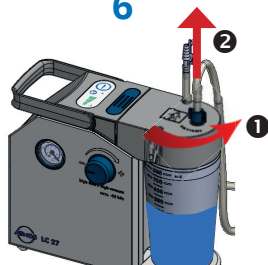
GA2M.0310301.0  
2019-08 Index 01

# Nach der Absaugung | After suction | Après l'aspiration

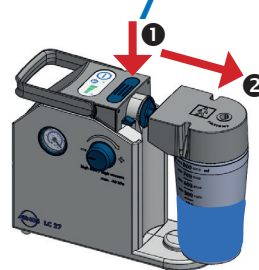
5



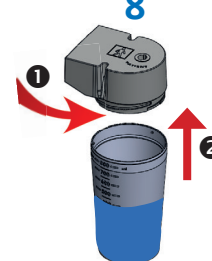
6



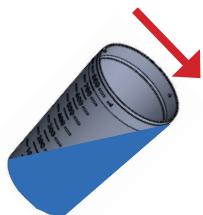
7



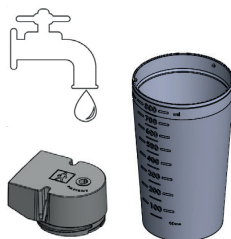
8



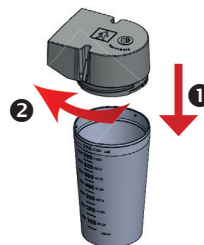
9



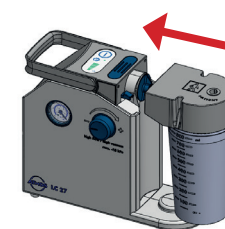
10



11



12



13



ATMOS MedizinTechnik  
GmbH & Co. KG  
Ludwig-Kegel-Str. 16  
79853 Lenzkirch  
Germany

CE 0124

+49 7653 689-0  
info@atmosmed.de